



SOTEN LIGHTING LTD

Sample : T1283A-24D-3090
Specification : KGP 26W/650mA
Sample No. : 85
Manufacturer : SOTEN
Instrument number: HAAS-2000

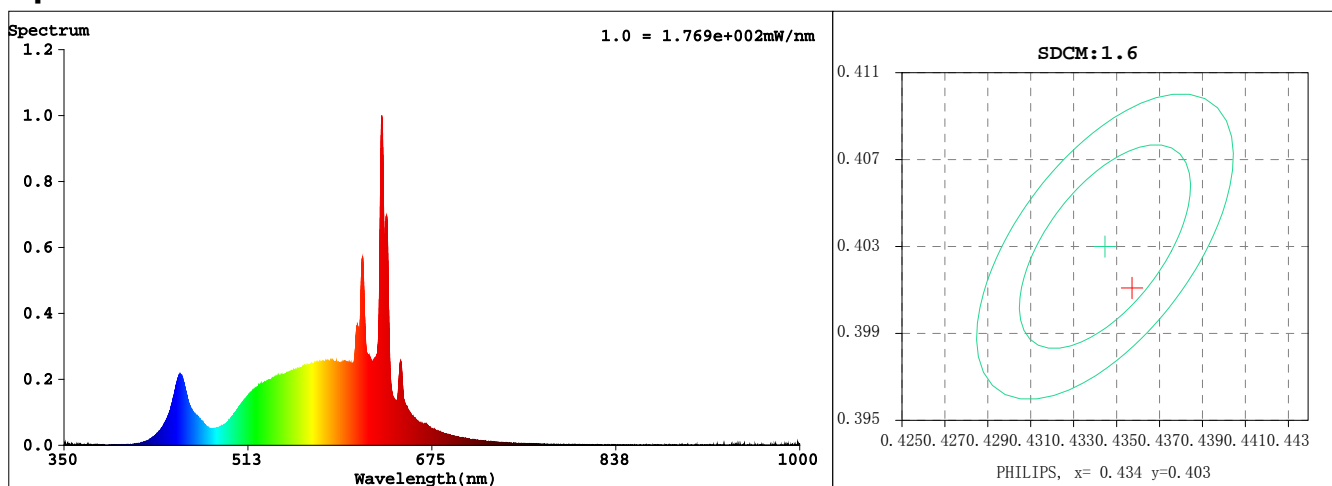
Date : 2025-09-05 16:55:08
Sam. Status : SH1814-0912J18W30H
Instrument : HAAS-2000(EVERFINE)
Test by : LI
Assessor : damin

Test Condition

Temperature : 25 °C
WL Range : 350nm-1000nm
Test Mode : Fast Test

RH : 65.0%
IP : 50498 (77%)
T : 39 ms
Sensitivity : High

Spectrum



Colorimetric Parameters

Chromaticity Coordinate: $x = 0.4353$ $y = 0.4011$ / $u' = 0.2508$ $v' = 0.5199$ ($duv = -9.76e-04$)

CCT= 3004K Prcp WL: $L_d = 583.2nm$ Purity=51.0%

Peak WL: $L_p = 631nm$ FWHM: $\approx 7.7nm$ Ratio: $R = 24.9\%$ $G = 72.8\%$ $B = 2.3\%$

Render Index: $R_a = 92.4$ TM30: $R_f = 89$ $R_g = 103$

$R_1 = 95$ $R_2 = 94$ $R_3 = 90$ $R_4 = 94$ $R_5 = 93$ $R_6 = 93$ $R_7 = 94$

$R_8 = 87$ $R_9 = 66$ $R_{10} = 83$ $R_{11} = 93$ $R_{12} = 73$ $R_{13} = 94$ $R_{14} = 93$ $R_{15} = 92$

LEVEL:OUT WHITE:ANSI_3000K

Photometric & Radiometric Parameters

Flux = 2914.2 lm Eff. : 121.30 lm/W $F_e = 8.5963 W$

Kred: 0.18243

Electrical parameters

$V = 230.1 V$ $I = 0.1094 A$ $P = 24.02 W$ PF = 0.9543

Freq=49.99 Hz

GBT5702

Gamut Index: $G_a = 1.1$

$C_1 = 90$ $C_2 = 74$ $C_3 = 98$ $C_4 = 108$ $C_5 = 108$ $C_6 = 94$ $C_7 = 72$

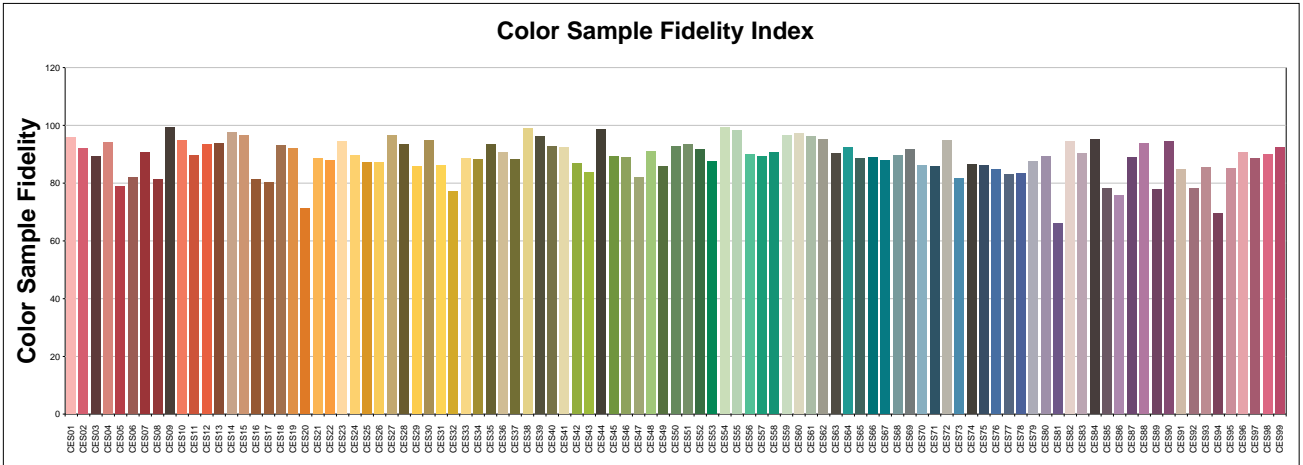
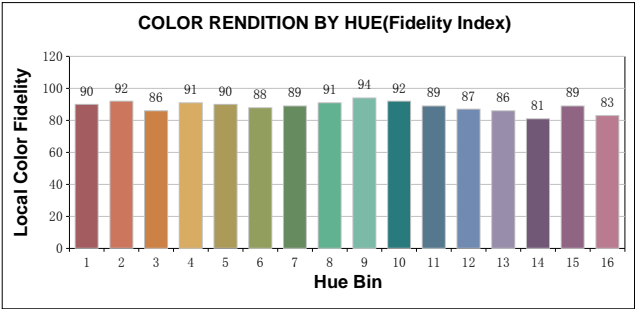
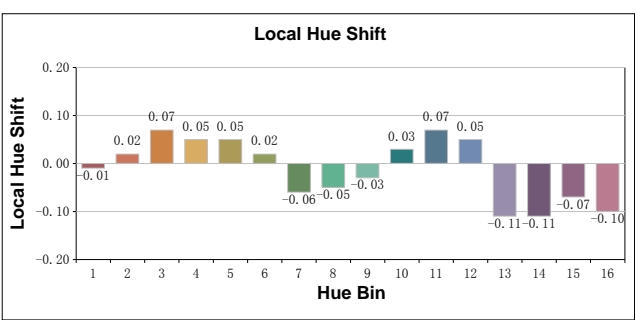
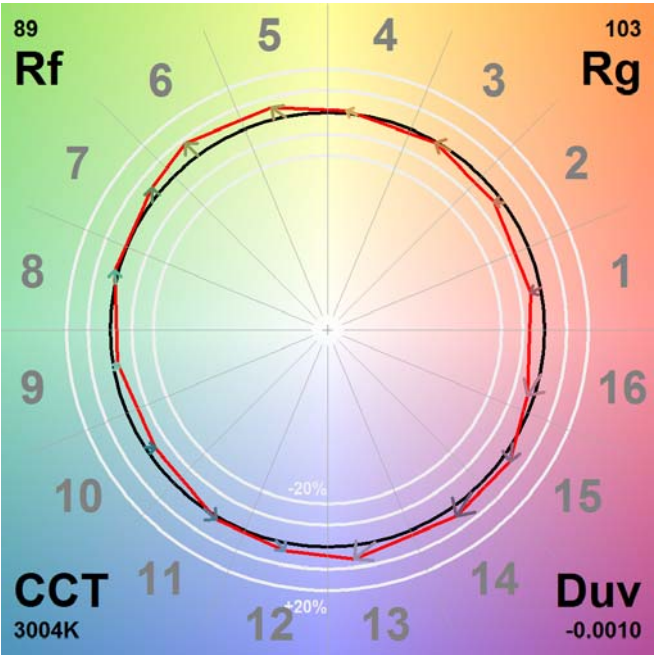
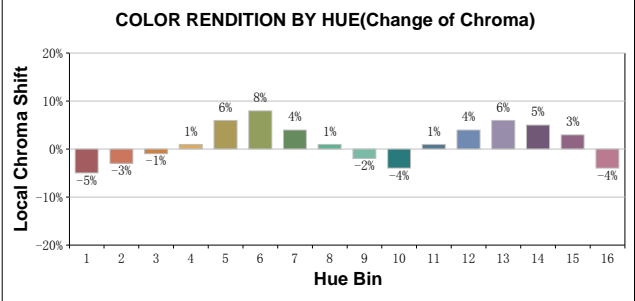
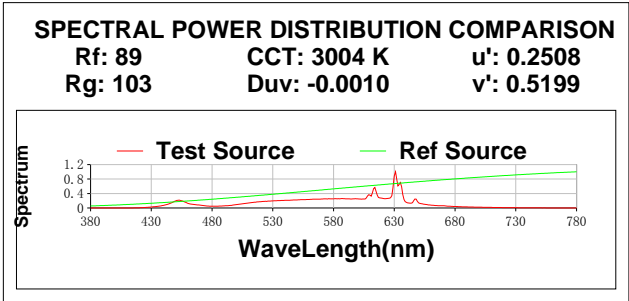
$C_8 = 89$ $C_9 = 96$ $C_{10} = 72$ $C_{11} = 106$ $C_{12} = 83$ $C_{13} = 85$ $C_{14} = 107$ $C_{15} = 91$

www.soten.hk Tel:+86 750 3778811 Fax:+86 750 3778800 Email:info@soten.hk

Address: Jin OU Road, JiangMen Gity, Guangdong, China

TM30

View Angle:2 Deg



All Rf:

Rf1 = 95.8	Rf2 = 91.9	Rf3 = 89.4	Rf4 = 94.2	Rf5 = 79.0	Rf6 = 82.0
Rf7 = 90.5	Rf8 = 81.2	Rf9 = 99.3	Rf10 = 94.7	Rf11 = 89.7	Rf12 = 93.5
Rf13 = 93.7	Rf14 = 97.5	Rf15 = 96.3	Rf16 = 81.2	Rf17 = 80.4	Rf18 = 93.0
Rf19 = 92.2	Rf20 = 71.2	Rf21 = 88.6	Rf22 = 87.8	Rf23 = 94.5	Rf24 = 89.7
Rf25 = 87.3	Rf26 = 87.1	Rf27 = 96.5	Rf28 = 93.3	Rf29 = 85.6	Rf30 = 94.7
Rf31 = 86.2	Rf32 = 77.2	Rf33 = 88.7	Rf34 = 88.1	Rf35 = 93.3	Rf36 = 90.8
Rf37 = 88.3	Rf38 = 98.8	Rf39 = 96.3	Rf40 = 92.6	Rf41 = 92.4	Rf42 = 87.0
Rf43 = 83.9	Rf44 = 98.5	Rf45 = 89.3	Rf46 = 88.8	Rf47 = 82.0	Rf48 = 91.2
Rf49 = 86.0	Rf50 = 92.9	Rf51 = 93.5	Rf52 = 91.8	Rf53 = 87.4	Rf54 = 99.3
Rf55 = 98.2	Rf56 = 90.1	Rf57 = 89.4	Rf58 = 90.8	Rf59 = 96.7	Rf60 = 97.3
Rf61 = 96.3	Rf62 = 95.2	Rf63 = 90.4	Rf64 = 92.6	Rf65 = 88.5	Rf66 = 88.9
Rf67 = 88.0	Rf68 = 89.7	Rf69 = 91.6	Rf70 = 86.1	Rf71 = 85.8	Rf72 = 94.9
Rf73 = 81.8	Rf74 = 86.5	Rf75 = 86.2	Rf76 = 84.7	Rf77 = 83.2	Rf78 = 83.2
Rf79 = 87.6	Rf80 = 89.2	Rf81 = 66.0	Rf82 = 94.5	Rf83 = 90.4	Rf84 = 95.0
Rf85 = 78.2	Rf86 = 75.6	Rf87 = 88.9	Rf88 = 93.8	Rf89 = 78.0	Rf90 = 94.3
Rf91 = 84.6	Rf92 = 78.1	Rf93 = 85.4	Rf94 = 69.5	Rf95 = 85.2	Rf96 = 90.7
Rf97 = 88.6	Rf98 = 89.9	Rf99 = 92.2			

HUE ANGLE ANALYSIS

			Graphic shift(%)	
Hue Bin	Hue Angle	Rf	Chroma	Hue
1	0.0° - 22.5°	90	-5	-1
2	22.5° - 45.0°	92	-3	2
3	45.0° - 67.5°	86	-1	7
4	67.5° - 90.0°	91	1	5
5	90.0° - 112.5°	90	6	5
6	112.5° - 135.0°	88	8	2
7	135.0° - 157.5°	89	4	-6
8	157.5° - 180.0°	91	1	-5
9	180.0° - 202.5°	94	-2	-3
10	202.5° - 225.0°	92	-4	3
11	225.0° - 247.5°	89	1	7
12	247.5° - 270.0°	87	4	5
13	270.0° - 292.5°	86	6	-11
14	292.5° - 315.0°	81	5	-11
15	315.0° - 337.5°	89	3	-7
16	337.5° - 360.0°	83	-4	-10